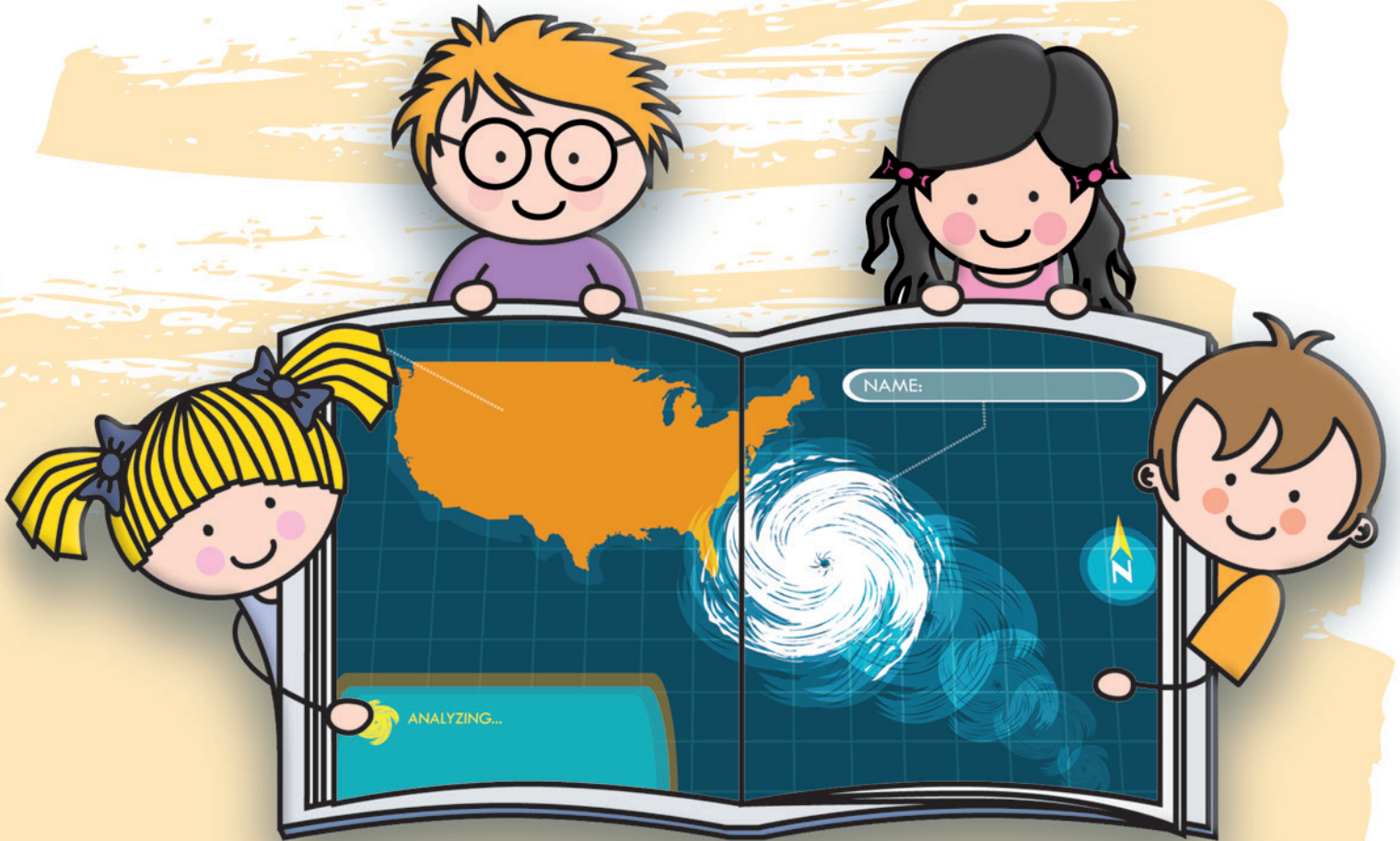




## Hands-On Activity:

Using the hurricane data and the tracking charts on the pages following, plot the latitude and longitude coordinates, with respect to intensity and time for Hurricane Katrina and Hurricane Rita.



## HURRICANE KATRINA

Time (EST)	Date	Lat	Lon	Wind	Storm
14	8/23/2005	23.1N	75.1W	35	TD
20	8/23/2005	23.4N	75.7W	35	TD
2	8/24/2005	23.8N	76.2W	35	TD
8	8/24/2005	24.5N	76.5W	40	TS
14	8/24/2005	25.4N	76.9W	45	TS
20	8/24/2005	26.0N	77.7W	50	TS
2	8/25/2005	26.1N	78.4W	60	TS
8	8/25/2005	26.2N	79.0W	65	TS
14	8/25/2005	26.2N	79.6W	70	TS
20	8/25/2005	25.9N	80.3W	80	C1
2	8/26/2005	25.4N	81.3W	75	C1
8	8/26/2005	25.1N	82.0W	85	C1
14	8/26/2005	24.9N	82.6W	100	C2
20	8/26/2005	24.6N	83.3W	105	C2
2	8/27/2005	24.4N	84.0W	110	C2
8	8/27/2005	24.4N	84.7W	115	C3
14	8/27/2005	24.5N	85.3W	115	C3
20	8/27/2005	24.8N	85.9W	115	C3
2	8/28/2005	25.2N	86.7W	145	C4
8	8/28/2005	25.7N	87.7W	165	C5
14	8/28/2005	26.3N	88.6W	175	C5
20	8/28/2005	27.2N	89.2W	160	C5
2	8/29/2005	28.2N	89.6W	145	C4
8	8/29/2005	29.5N	89.6W	125	C3
14	8/29/2005	31.1N	89.6W	90	C1
20	8/29/2005	32.6N	89.1W	60	TS
2	8/30/2005	34.1N	88.6W	45	TS
8	8/30/2005	35.6N	88.0W	35	TD
14	8/30/2005	37.0N	87.0W	35	TD
20	8/30/2005	38.6N	85.3W	35	TD
2	8/31/2005	40.1N	82.9W	30	TD

### KEY

Descriptor	Category of Storm
TD	Tropical Depression
TS	Tropical Storm
C1	Category 1 Hurricane
C2	Category 2 Hurricane
C3	Category 3 Hurricane
C4	Category 4 Hurricane
C5	Category 5 Hurricane



## HURRICANE RITA

Time (EST)	Date	Lat	Lon	Wind	Storm
20	9/17/2005	21.3N	69.9W	30	TD
2	9/18/2005	21.6N	70.7W	30	TD
8	9/18/2005	21.9N	71.5W	35	TD
14	9/18/2005	22.2N	72.3W	40	TS
20	9/18/2005	22.4N	73.0W	50	TS
2	9/19/2005	22.6N	73.8W	60	TS
8	9/19/2005	22.8N	74.7W	65	TS
14	9/19/2005	23.1N	75.9W	70	TS
20	9/19/2005	23.3N	77.2W	70	TS
2	9/20/2005	23.5N	78.8W	70	TS
8	9/20/2005	23.7N	80.3W	80	C1
14	9/20/2005	23.9N	81.6W	100	C2
20	9/20/2005	24.1N	82.7W	110	C2
2	9/21/2005	24.2N	84.0W	125	C3
8	9/21/2005	24.2N	85.2W	140	C4
14	9/21/2005	24.3N	86.2W	165	C5
20	9/21/2005	24.5N	86.9W	175	C5
2	9/22/2005	24.8N	87.6W	180	C5
8	9/22/2005	25.2N	88.3W	160	C5
14	9/22/2005	25.6N	89.1W	145	C4
20	9/22/2005	26.0N	88.9W	140	C4
2	9/23/2005	26.5N	90.7W	135	C4
8	9/23/2005	27.1N	91.5W	135	C4
14	9/23/2005	27.8N	92.3W	125	C3
20	9/23/2005	28.6N	93.0W	120	C3
2	9/24/2005	29.4N	93.6W	115	C3
8	9/24/2005	30.5N	94.1W	75	C1
14	9/24/2005	31.6N	94.1W	50	TS
20	9/24/2005	32.7N	94.0W	40	TS
2	9/25/2005	33.7N	93.6W	35	TD
8	9/25/2005	34.7N	92.5W	30	TD
14	9/25/2005	35.8N	91.4W	30	TD
20	9/25/2005	37.0N	90.1W	25	TD
2	9/26/2005	39.5N	88.0W	25	SD

**Atlantic Hurricane Tracking Chart on pages 14 and 15.**